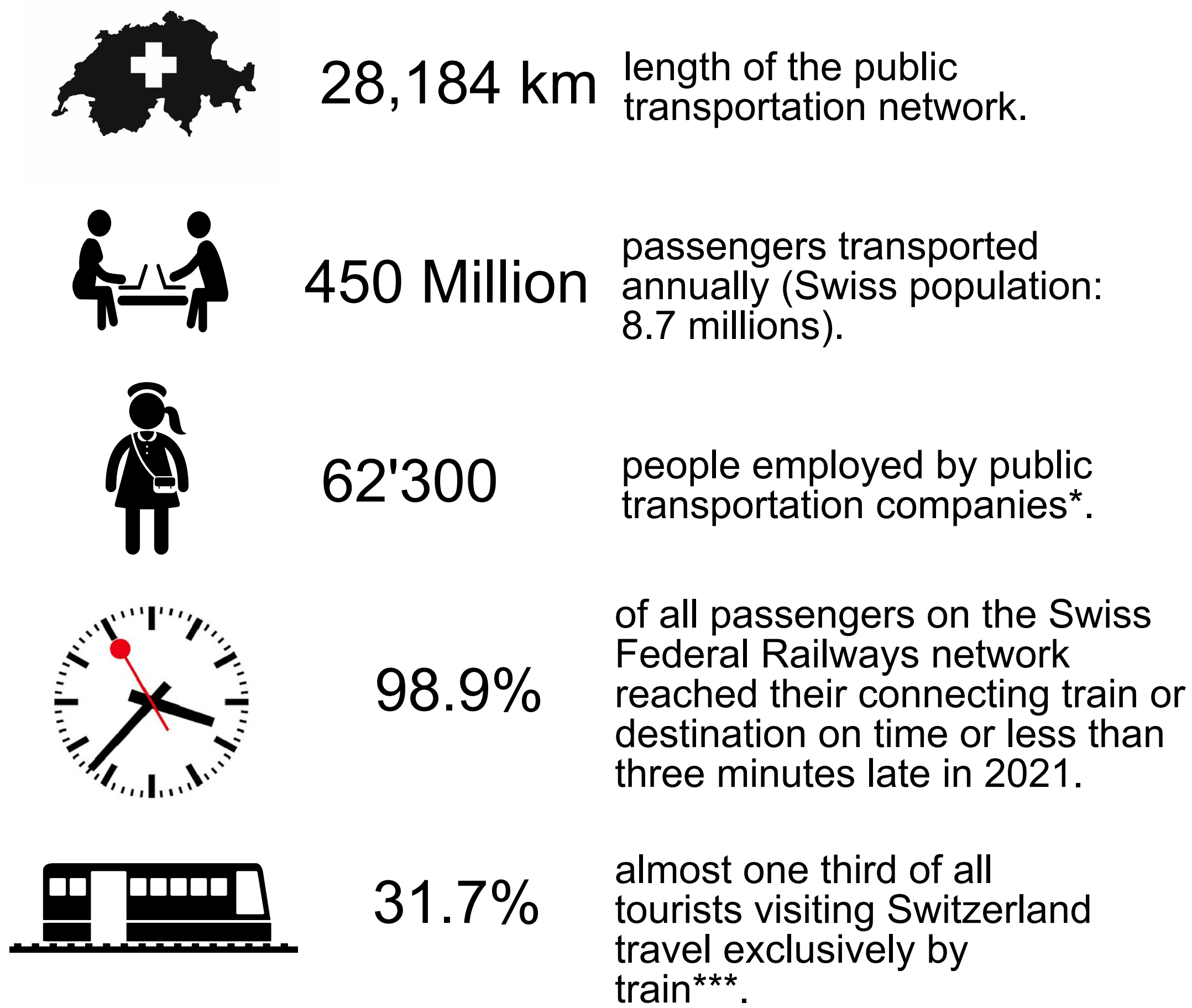




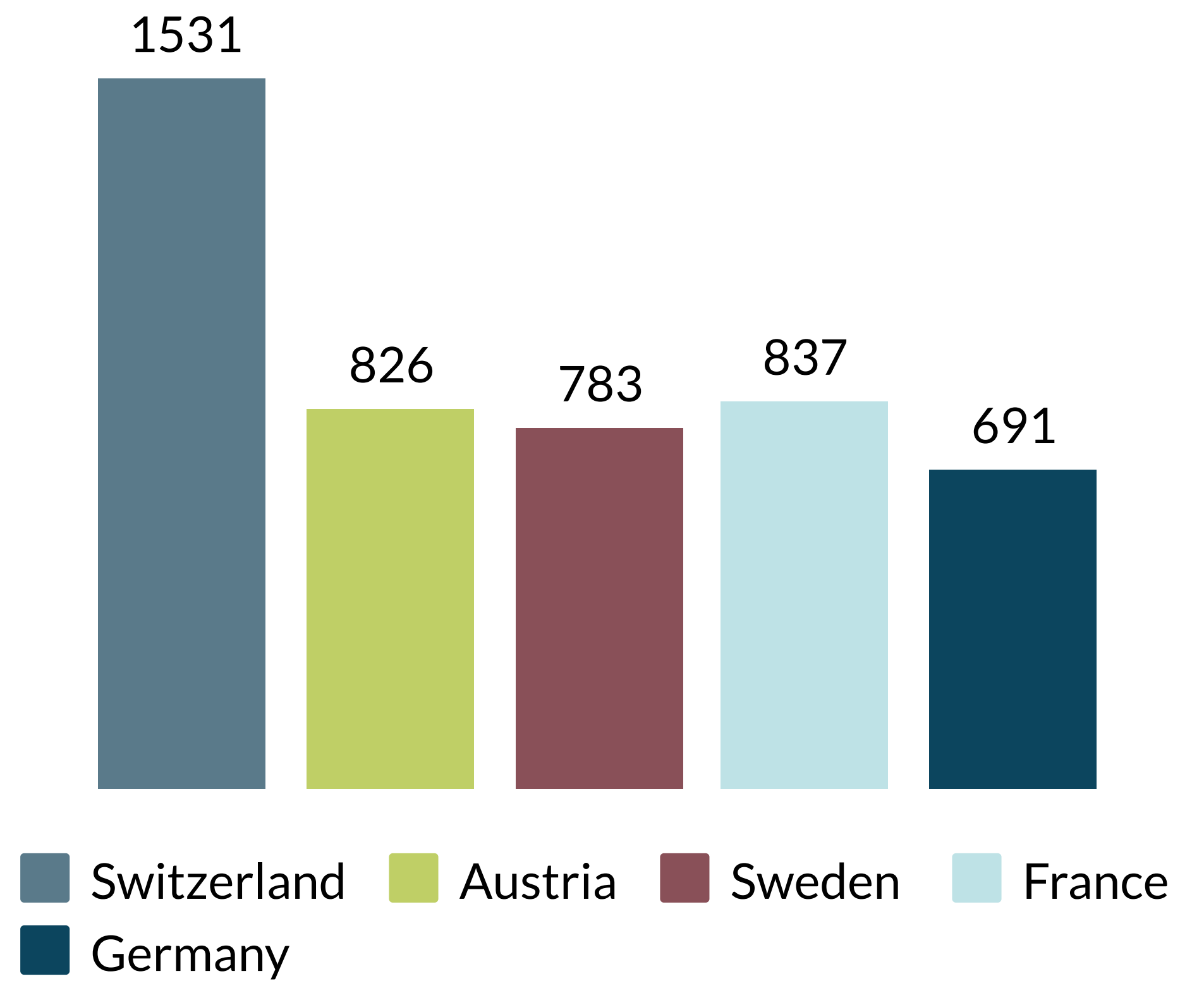
Public Transport in Switzerland.

Version October 2022

Key figures*/**

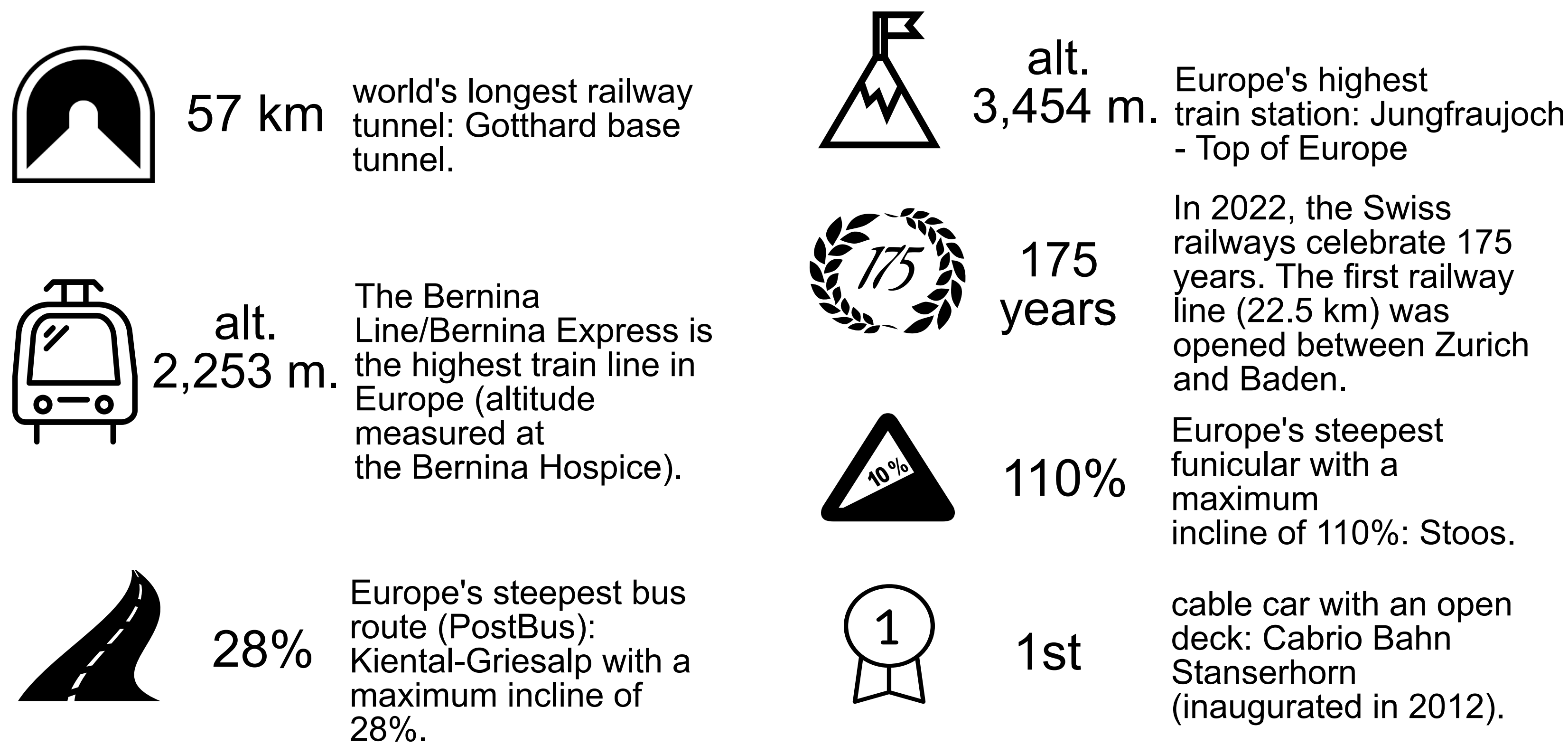


Number of rail kilometers travelled per resident (2020)**

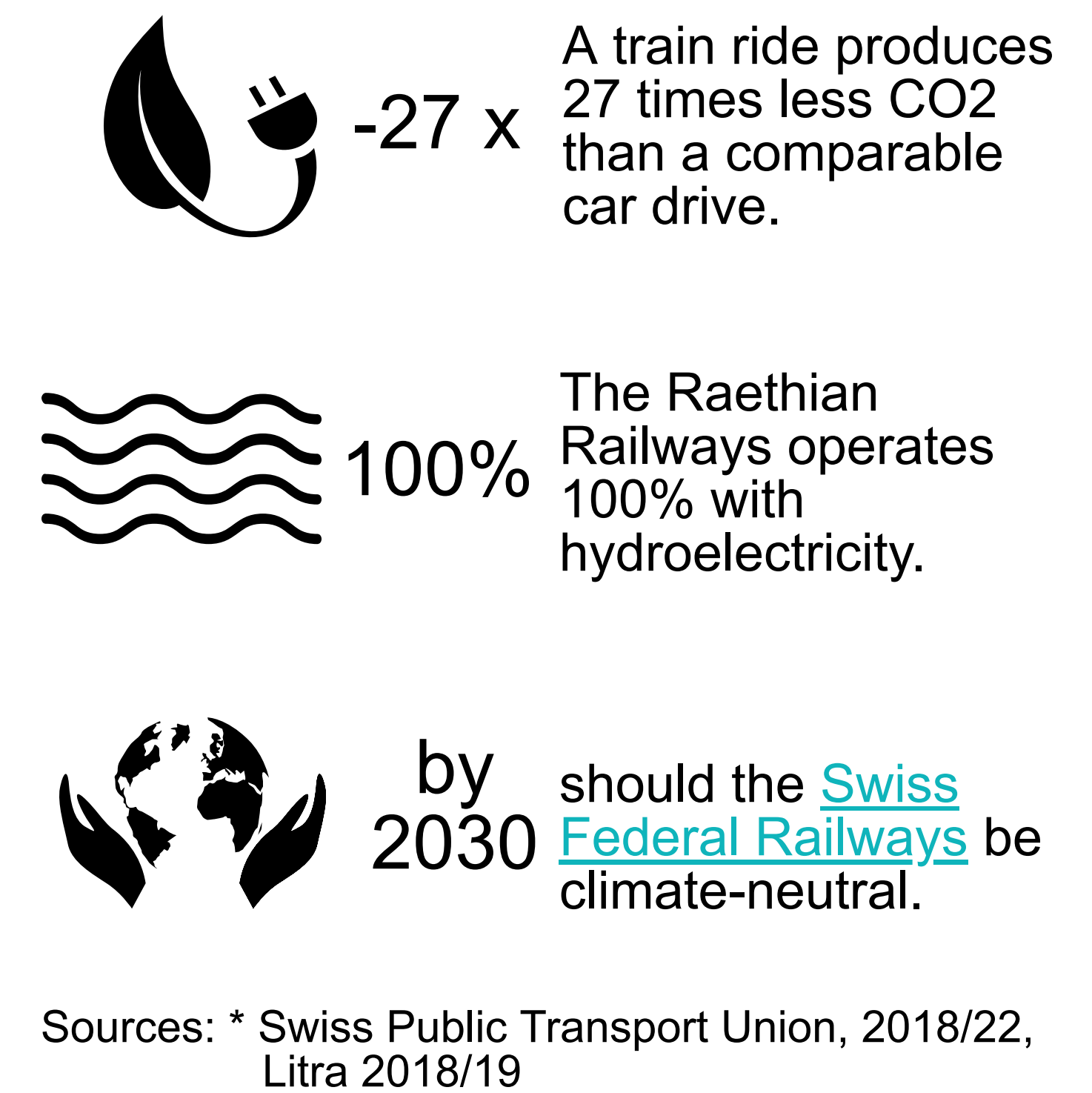


Sources: * Swiss Public Transport Union, 2021/22, ** Litra 2020/21. Even during the pandemic, Switzerland remained the European champion in rail travel.
*** Tourism Monitor Switzerland 2017

A few records



About sustainability*



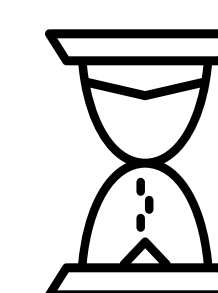
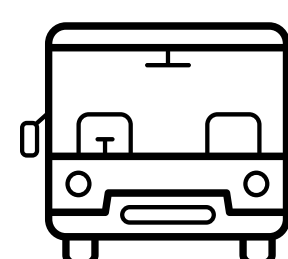
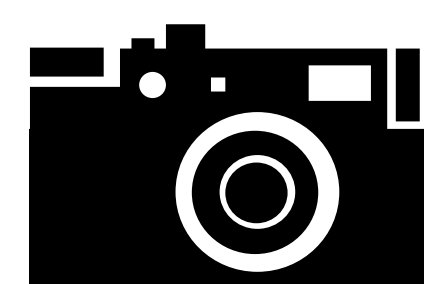
Tourists who most frequently travel by train in Switzerland***

1. Korea (74.9%)
2. Greater China (71.9%)
3. Japan (68.2%)
4. Southeast Asia (66.3%)
5. India (63.4%)
6. USA (62.1%)
7. Canada (60.4%)
8. Australia / New Zealand (57.6%)
9. United Kingdom (54.3%)
10. Brazil (53.9%)

*** According to their country of origin. Source: Tourism Monitor Switzerland 2017.

Swiss premium panoramic trains

- [Bernina Express](#)
- [Glacier Express](#)
- [GoldenPass Panoramic](#)
- [Gotthard Panorama Express](#)
- [Luzern-Interlaken Express](#)



Did you know ?*

Around 250 transport companies are part of the National Direct Transport Network, which recognises monthly and annual travelcards. Every second person in Switzerland owns a public transport monthly or annual travelcard.

The [Grand Train Tour of Switzerland](#) is 1280 km long. On this spectacular journey, you experience many highlights and sights of Switzerland in panoramic trains.

The conception phase of the Swiss Railways' timetable begins 20 years before its implementation.